

Bimetal-Thermometer Model A46

WIKA Data Sheet TM46.02

Applications

- Für domestic and industrial heating systems
- Hot water boiler
- Solar power systems
- Heat transfer systems

Special Features

- Reliable and economical
- Nominal size 50, 63, 80 and 100 mm
- Scale ranges up to -30 ... 120 °C

Description

Nominal size

50, 63, 80, 100 mm

Temperature element

Coiled bimetal

Range of application

Maximum scale value

Case

Aluminium (Typ A46.10/11)
Steel, zinc plated (Typ A46.20)
Plastic, black (Typ A46.30)

Dial

White, black lettering

Pointer

Plastic, black (Typ A46.20/30)
Aluminium, black (Typ A46.10/11)

Window

Acrylic plastic

Location of stem

Centre back



Bimetal-Thermometer Model A46.20.063



Clip on thermometer Model A46.11.063



Bimetal-Thermometer Model A46.30.063

Design of connection

with thermowell - Model A46.10/20/30

Stem with detaching thermowell (friction retained)

CU-alloy

Length $l_1 = 40, 60, 100$ mm

Pressure rating of thermowell

6 bar maximum

Connection

Thermowell G1/2B

Zero adjustment

At bottom of stem

Stem

Ø 9 mm, Aluminium (Model A46.10/30)

Ø 9 mm, CU-alloy (Model A46.20)

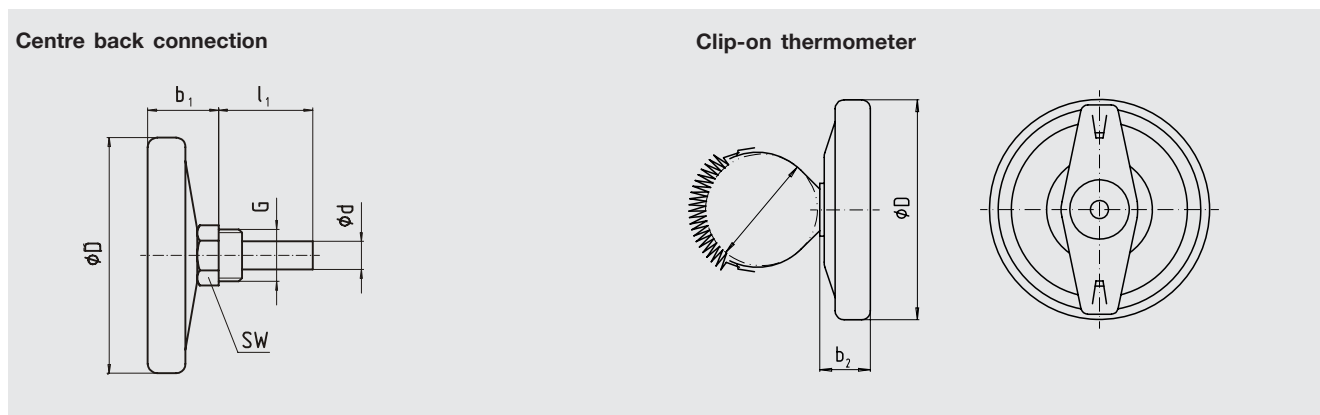
Clip-on thermometer - Model A46.11

With fin and strap

Dimensions in mm

Standard version Model A46.10 with case aluminium

Model A46.11 clip-on thermometer with fin and strap



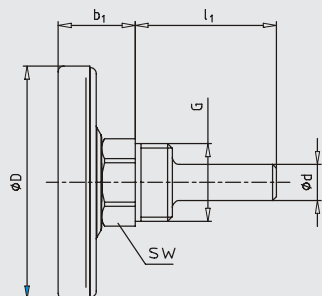
NS	Dimensions in mm				G	l_1	SW	Weight in kg	
	b_1	b_2	$\varnothing d$	$\varnothing D$					Clip on
63	23	21	12 ¹⁾	63	G 1/2 B	40, 60, 100	21	0.065	0,04
80	25	22	12 ¹⁾	80	G 1/2 B	40, 60, 100	21	0.080	0,06
100	30	22	12 ¹⁾	100	G 1/2 B	40, 60, 100	21	0.105	-

1) $\varnothing d = 11$ mm with thermowell length $l_1 = 100$ mm

Dimensions in mm

Standard version A46.20 with case steel, zinc plated

Centre back connection



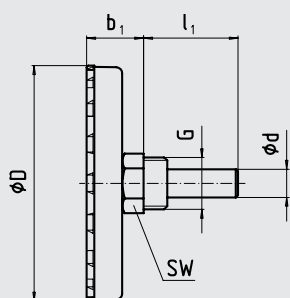
NS	Dimensions in mm						Weight in kg
	b_1	ϕd	ϕD	G	l_1	SW	
63	23	12 ¹⁾	63	G ½ B	40, 60, 100, 160	21	0.04
80	23	12 ¹⁾	80	G ½ B	40, 60, 100, 160	21	0.06
100	23	12 ¹⁾	100	G ½ B	40, 60, 100, 160	21	0.08

1) $\phi d = 11$ mm with thermowell length $l_1 = 100$ mm

Dimensions in mm

Standard version A46.30 with case, plastic black

Centre back connection



NS	Dimensions in mm					SW	Weight in kg
	b_1	d	ϕD	G	l_1		
50	23	12 ²⁾	50	G ½ B	40, 60, 100, 160 ¹⁾	21	0.06
63	23	12 ²⁾	63	G ½ B	40, 60, 100, 160 ¹⁾	21	0.07
80	24,5	12 ²⁾	80	G ½ B	40, 60, 100, 160 ¹⁾	21	0.08
100	24,5	12 ²⁾	100	G ½ B	40, 60, 100, 160 ¹⁾	21	0.10

1) $l_1 = 160$ mm thermowell with retainer screw only

2) $d = 11$ mm with thermowell length > 100 mm

Ordering information

Model / Nominal size / Scale range / Size of connection / Length of stem l_1 / Optional extras required

Specifications and dimensions given in this leaflet represent the state of engineering at the time of printing. Modifications may take place and materials specified may be replaced by others without prior notice.

